



NORFOLK MUSIC SERVICE INFORMATION BOOKLET 2026/27

SUPPORTING MUSICAL JOURNEYS



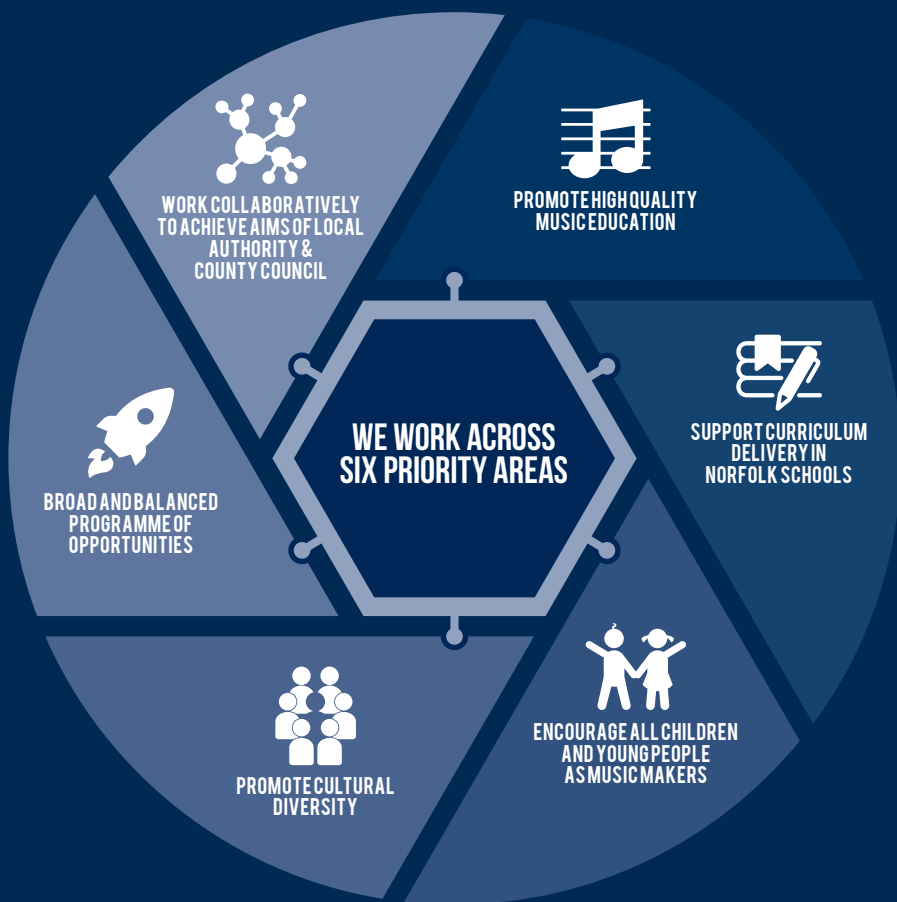
CONTENTS

LEARN MUSIC : LIVE MUSIC	5
KICKSTARTERS	6
INSTRUMENTAL TUITION	7
CURRICULUM DELIVERY	8
MUSICIAN IN RESIDENCE	9
GROUP MUSIC MAKING & AFTER SCHOOL CLUBS	10
GROUP MUSIC MAKING OPPORTUNITIES IN THE COMMUNITY	11
FEE REMISSIONS	12
MUSIC PROGRESSION PATHWAY	14
TEACHING CALENDAR 2026/27	16





THE MUSIC SERVICE AIMS





Learn Music: Live Music

Inspire your pupils through high-quality, live and classroom-based music experiences.

- ▶ 33 weeks of classroom instrumental learning with a specialist teacher
- ▶ Minimum 1 hour per week (can be delivered as two 30-minute sessions in the same room)

Flexible delivery options:

- ▶ One class for the full year, or
- ▶ Multiple classes (minimum 11 weeks per class)
- ▶ Up to 6 classes can each access 11 weeks across the year

Curriculum Resources (Choose One)

- ▶ Access to Charanga, Sparkyard, or Musical Futures
- ▶ One subsidised licence per school
- ▶ Subject to formal provider agreement

Instruments Included

- ▶ Access to a full class set of instruments
- ▶ Supporting all teaching sessions

Live Music Experience

- ▶ One 50-minute live performance in your school
- ▶ Delivered by Music Service teachers or trusted partners
- ▶ Designed for the whole school to enjoy

Charges: £44 per hour (Full Academic Year)

This equates to £1,452 per annum based on one hour per week delivery

Bring music to life in your school with expert teaching, hands-on learning, and a live performance experience.





Kickstarters

SMALL GROUP TUITION OFFER

A cost-effective way to begin instrumental learning in your school.

Programme Overview

- ▶ 50% reduction on the instrumental hourly rate (first year only)
- ▶ Small group tuition for 6 students per group
- ▶ 30-minute lesson each week
- ▶ Delivered over 33 weeks

Who Can Access

Students must be:

- ▶ Beginners, or
- ▶ Have accessed a Classroom Instrumental Learning (CIL) programme in the previous academic year
- ▶ All students must be in the same key stage

What's Included

- ▶ Instrument loan for all participating students
- ▶ Free access to Norfolk Music Service locality ensembles during the programme
- ▶ 50% discount on locality ensembles for 2027/28

Requirements

- ▶ Groups must have 6 students to qualify
- ▶ Maximum of 1 hour per school (2 groups) under this offer
- ▶ Available only to schools purchasing additional services from Norfolk Music Service

Charges: £11 per week per group (for the first year only)
£22 per week per group thereafter
(based on 6 students per group)

Remissions

Schools must complete a termly remission form by the advertised deadline

Apply here:



WWW.NMHUB.CO.UK/SITE/FEE-REMISSION-2026-2027/

Late submissions will not be accepted



Instrumental tuition

The Music Service works in partnership with schools and educational settings to promote high quality music education through instrumental and vocal teaching. Weekly lessons are tailored to meet the needs, aspirations and interests of all young people and can be provided on an individual, paired or group basis.

Charges:

£44 per hour

Individual:

£22 per 30 minutes

14.70 per 20 minutes

5 pupils sharing a 30 minute lesson:

£4.40 a week per pupil

PER YEAR (33 weeks)

1 hour per week

£1,452

30 minutes per week

£726

20 minutes per week

£484

5 pupils sharing a 30 minute lesson:

£145.20 per year

Please note lessons are based on a Service Level Agreement of a minimum of 33 weeks of the academic year. We are unable to offer a contract for less than 33 weeks. Lessons will be delivered per the Teaching Calendar on [page 16](#) of this brochure. Teaching Days are marked in blue.



Curriculum Delivery

With the increased pressures that schools are under, why not let the Music Service take care of your curriculum music provision.

The Music Service can provide a bespoke support package aligned to your school's needs offering a programme of weekly support to enhance your curriculum.

All curriculum delivery will be billed upfront as a single payment at the start of the Academic Year based on a 33 week buy-back duration (this equates to £1,650 per annum per hour of tuition ordered at the rate of £50 per hour). Additional weeks delivery may be arranged on request (based on teacher availability), but these must be pre-booked to avoid disappointment at the start of the Academic Year.

Charges: £50 per hour

a member of staff responsible for behavior will need to remain with the class throughout the lesson.



[Music Service Teacher] brings exceptional expertise and infectious enthusiasm to our weekly music curriculum, inspiring every child to engage, create and perform with confidence. The specialist teaching enriches our provision enormously and ensures music remains a vibrant, valued and joyful part of school life.

Classroom teacher



Musician in Residence

Raise the profile of music in your school by inviting one of our highly qualified Music Service staff to become a valued member of your school for a whole day. Enjoy the flexibility of being able to offer a wide range of musical experiences for your pupils while engaging in a creative curriculum.

We provide a Musician in Residence programme in primary and complex needs settings. A typical one-day Musician in Residence Programme can deliver a combination of the following:

- ▶ PPA Provision: National Curriculum music delivery
- ▶ Instrumental Tuition (individual, small group or whole class)
- ▶ Whole school singing assemblies
- ▶ In-school group music making (both instrumental and choral)
- ▶ After-school clubs
- ▶ Support for concerts and performances
- ▶ Maximum of 6 hours contact time

Charges: £260 per day

All Musician in Residence packages will be billed upfront at the start of the Academic Year based on a 33 week buy-back duration (this equates to £8,580 per annum per day of tuition ordered). Please note that the maximum amount of contact time per day is 6 hours and timetables should be arranged in discussion with the teacher in advance.

a member of staff responsible for behavior will need to remain with the class throughout the lesson.



Group Music Making & After School Clubs

The Music Service can provide a flexible solution to in-school music making provision including after school clubs where required. Tuition can take place anytime during the extended school day and is offered on a wide range of instruments from music tech to full scale opera projects, just ask!

If NMS teachers are required to support additional activities (e.g. concerts), this must be booked in advance through Norfolk Music Service. This will be subject to teacher availability and charged for at an hourly rate.

Charges: £50 per hour

All After School Clubs will be billed upfront at the start of the academic year. This is charged for 33 weeks of the year.

A member of the school staff must dismiss students at the end of the day.



Group Music Making opportunities in the community

Ensembles are an important part of learning to play a musical instrument and are often the most enjoyable and socially rewarding part of the process. There are many Group Music Making opportunities across the County where young people can take part in ensembles and additional lessons.

The Music Service works towards providing a musical pathway for all its young players for every stage of learning. Further information on opportunities in your area can be [found here](#)



Fee remissions

There is a fee remissions policy in place for Instrumental Tuition:

- ▶ **40%** reduction in fees for instrumental tuition and Norfolk Music Service Ensemble pupils in receipt of Free School Meals for one shared lesson per week, on one instrument
- ▶ **40%** reduction in fees for instrumental tuition for Children in Care
- ▶ **50%** reduction for group tuition accessing their first year of learning an instrument for 6 pupils accessing a 30-minute lesson for 33 weeks as part of the Kickstarters programme. Please note there is a maximum buy in of 1 hour per school under Kickstarters remissions.



WWW.NMHUB.CO.UK/SITE/FEE-REMISSION-2026-2027/
PLEASE FOLLOW THIS LINK FOR FURTHER INFORMATION





MUSIC PROGRESSION PATHWAY (FOR SCHOOLS & TEACHERS)

ENSEMBLE SKILLS (EARLY STAGE)

Local Beginner Ensembles

- ▶ First ensemble experiences
- ▶ Accessible and inclusive

Teacher Impact:

- ✔ Reinforces classroom and small group learning
- ✔ Develops teamwork and listening skills



EARLY DEVELOPMENT (TARGETED SUPPORT)

Kickstarters – Small Group Tuition

- ▶ Progression from whole class learning
- ▶ Focused beginner group lessons

Teacher Impact:

- ✔ Supports pupil retention in music
- ✔ Builds confidence beyond classroom learning



EXCELLENCE & EXTENSION

Regional & National Opportunities

- ▶ County, regional, and national ensembles

Teacher Impact:

- ✔ Provides stretch for high-achieving pupils
- ✔ Supports progression into further study



ENSEMBLE DEVELOPMENT (INTERMEDIATE)

Locality Ensembles

- ▶ Area-based ensembles with regular rehearsals
- ▶ Performance opportunities

Teacher Impact:

- ✔ Raises musical standards
- ✔ Builds pride through performance



SUSTAINED PROGRESSION (CORE LEARNING)

Instrumental Tuition

- ▶ Individual or small group lessons
- ▶ Structured progression (e.g. graded pathways)

Teacher Impact:

- ✔ Evidences musical progress over time
- ✔ Supports GCSE / BTEC / wider curriculum pathways



WHOLE CLASS MUSIC

Learn Music: Live Music

- ▶ Curriculum-aligned whole class instrumental teaching
- ▶ Delivered in partnership with school staff
- ▶ Supports National Curriculum outcomes

Teacher Impact:

- ✔ Engages all pupils in practical music-making
- ✔ Identifies interest and potential



OUTCOMES FOR SCHOOLS

- ▶ Clear, structured music progression pathway
- ▶ Increased pupil engagement and retention
- ▶ Stronger performance culture
- ▶ Support for curriculum and enrichment goals

HOW SCHOOLS ENGAGE

- ▶ Whole class programmes
- ▶ Instrumental lesson packages
- ▶ Ensemble signposting
- ▶ Partnership with Norfolk Music Service staff

INCLUSIVE | PROGRESSIVE | HIGH QUALITY MUSIC EDUCATION FOR EVERY YOUNG PERSON



TEACHING CALENDAR 2026/27

September 2026							
WK	M	T	W	T	F	S	S
		1	2	3	4	5	6
	7	8	9	10	11	12	13
1	14	15	16	17	18	19	20
2	21	22	23	24	25	26	27
3	28	29	30				

October 2026							
WK	M	T	W	T	F	S	S
3				1	2	3	4
4	5	6	7	8	9	10	11
5	12	13	14	15	16	17	18
6	19	20	21	22	23	24	25
	26	27	28	29	30	31	

November 2026							
WK	M	T	W	T	F	S	S
							1
7	2	3	4	5	6	7	8
8	9	10	11	12	13	14	15
9	16	17	18	19	20	21	22
10	23	24	25	26	27	28	29
11	30						

December 2026							
WK	M	T	W	T	F	S	S
11		1	2	3	4	5	6
12	7	8	9	10	11	12	13
13	14	15	16	17	18	19	20
	21	22	23	24	25	26	27
	28	29	30	31			

January 2027							
WK	M	T	W	T	F	S	S
					1	2	3
	4	5	6	7	8	9	10
14	11	12	13	14	15	16	17
15	18	19	20	21	22	23	24
16	25	26	27	28	29	30	31

February 2027							
WK	M	T	W	T	F	S	S
17	1	2	3	4	5	6	7
18	8	9	10	11	12	13	14
	15	16	17	18	19	20	21
19	22	23	24	25	26	27	28


March 2027							
WK	M	T	W	T	F	S	S
20	1	2	3	4	5	6	7
21	8	9	10	11	12	13	14
22	15	16	17	18	19	20	21
23	22	23	24	25	26	27	28
	29	30	31				

April 2027							
WK	M	T	W	T	F	S	S
				1	2	3	4
	5	6	7	8	9	10	11
	12	13	14	15	16	17	18
24	19	20	21	22	23	24	25
25	26	27	28	29	30	31	


May 2027							
WK	M	T	W	T	F	S	S
						1	2
26	3	4	5	6	7	8	9
	10	11	12	13	14	15	16
27	17	18	19	20	21	22	23
28	24	25	26	27	28	29	30
	31						

June 2027							
WK	M	T	W	T	F	S	S
		1	2	3	4	5	6
29	7	8	9	10	11	12	13
30	14	15	16	17	18	19	20
31	21	22	23	24	25	26	27
	28	29	30				

July 2027							
WK	M	T	W	T	F	S	S
				1	2	3	4
32	5	6	7	8	9	10	11
33	12	13	14	15	16	17	18
	19	20	21	22	23	24	25
	26	27	28	29	30	31	

Key:
 Teaching Days
 Non Teaching Days

Please note lessons are based on a Service Level Agreement of a minimum of 33 weeks of the academic year. We are unable to offer a contract for less than 33 weeks. Lessons will be delivered as per the Teaching Calendar. Teaching Days are marked in blue.



The deadline to book tuition is Friday 26th June 2026. **Tuition will be booked on a first come first served basis.** Any additional tuition will be offered as soon as an appropriate teacher is available for your chosen instrument in your area of the county.

[Please request your tuition here](#)

Norfolk and Suffolk Music Hub offer a free subscription to all schools in Norfolk and Suffolk with the option of purchasing additional Hub-Enabled Purchase Enhancements. Please register for your **[Hub Subscription here](#)**

To discuss any individual educational setting requirements further please contact **krista.ribbons@norfolk.gov.uk**