



NORFOLK MUSIC SERVICE INFORMATION BOOKLET 2025/26

SUPPORTING MUSICAL JOURNEYS

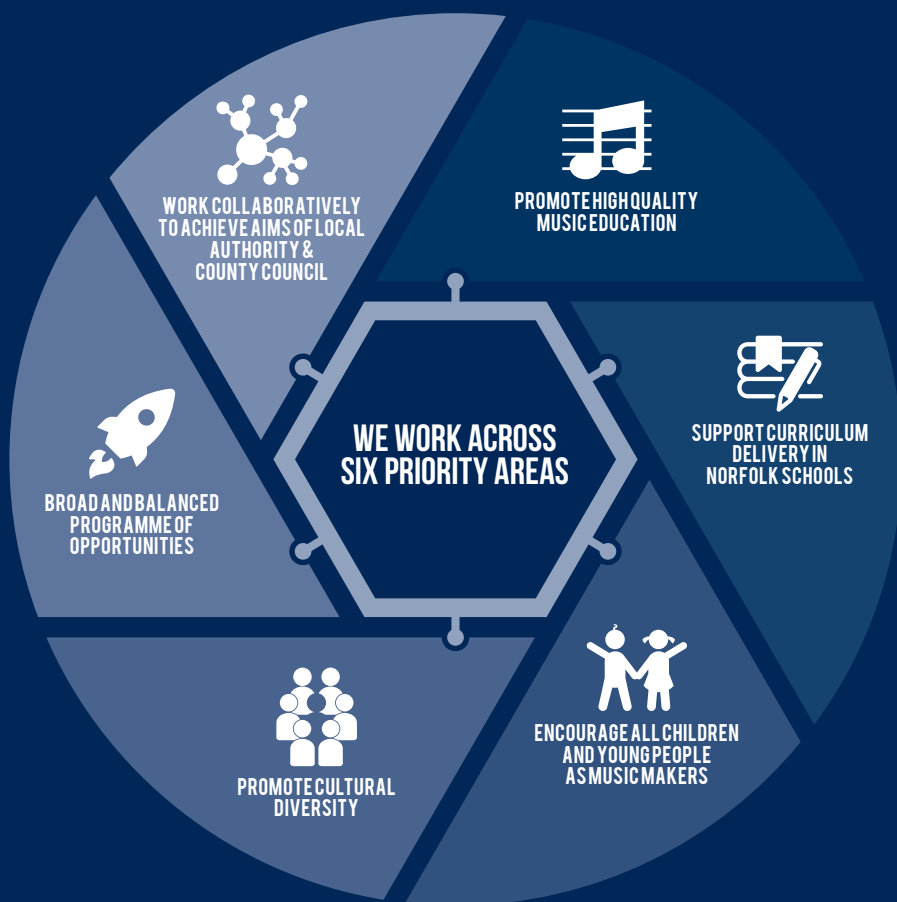
CONTENTS

| | |
|---|----|
| INSTRUMENTAL TUITION | 5 |
| CURRICULUM DELIVERY | 6 |
| MUSICIAN IN RESIDENCE | 7 |
| GROUP MUSIC MAKING & AFTER SCHOOL CLUBS | 8 |
| GROUP MUSIC MAKING OPPORTUNITIES IN THE COMMUNITY | 9 |
| TEACHING CALENDAR 2025/26 | 13 |





THE MUSIC SERVICE AIMS



INSTRUMENTAL TUITION

The Music Service works in partnership with schools and educational settings to promote high quality music education through instrumental and vocal teaching.

Weekly lessons are tailored to meet the needs, aspirations and interests of all young people and can be provided on an individual, paired or group basis.

Charges:

PER HOUR

| | |
|------------|-----|
| Individual | £42 |
| 2 pupils | £21 |
| 6 pupils | £7 |

PER YEAR (33 weeks)

| | |
|------------|--------|
| Individual | £1,386 |
| 2 pupils | £693 |
| 6 pupils | £231 |

PER 30 MINUTES

| | |
|------------|--------|
| Individual | £21 |
| 2 pupils | £10.50 |
| 6 pupils | £3.50 |

PER YEAR (33 weeks)

| | |
|------------|---------|
| Individual | £693 |
| 2 pupils | £346.50 |
| 6 pupils | £115.50 |

Please note lessons are based on a Service Level Agreement of a minimum of 33 weeks of the academic year. We are unable to offer a contract for less than 33 weeks. Lessons will be delivered just per the Teaching Calendar on **page 13** of this brochure. Teaching Days are marked in blue.



WWW.NORFOLKMUSICHUB.ORG.UK/SITE/FINANCIAL-ASSISTANCE/
PLEASE FOLLOW THIS LINK FOR FURTHER INFORMATION

There is a fee remissions policy in place for Instrumental Tuition:

- ▶ **50%** reduction in fees for pupils in receipt of Free School Meals
- ▶ **100%** reduction in fees for Children in Care
- ▶ **50%** reduction in fees in the first year of learning for those pupils who have accessed a Whole Class Ensemble Teaching (CIL) programme in the previous Academic Year.

Please note lessons are based on a Service Level Agreement of a minimum of 33 weeks per academic year

CURRICULUM DELIVERY

With the increased pressures that schools are under, why not let the Music Service take care of your curriculum music provision.

The Music Service can provide a bespoke support package aligned to your school's needs offering a programme of weekly support to enhance your curriculum.

All curriculum delivery will be billed upfront as a single payment at the start of the Academic Year based on a 33 week buy-back duration (this equates to £1,584 per annum per hour of tuition ordered at the rate of £48 per hour). Additional weeks delivery may be arranged on request (based on teacher availability), but these must be pre-booked to avoid disappointment at the start of the Academic Year.

Charges: £48 per hour



a member of staff responsible for behavior will need to remain with the class throughout the lesson.

[Music Service Teacher] has been an inspiration to staff and pupils alike - utterly transforming the quality of provision and we have loved having their incredible expertise with us. They are amazing; linking all their teaching to our curriculum and needs in a faultless way. Completely priceless.

Classroom teacher



MUSICIAN IN RESIDENCE

Raise the profile of music in your school by inviting one of our highly qualified Music Service staff to become a valued member of your school for a whole day. Enjoy the flexibility of being able to offer a wide range of musical experiences for your pupils while engaging in a creative curriculum.

We provide a Musician in Residence programme in primary and complex needs settings. A typical one-day Musician in Residence Programme can deliver a combination of the following:

- ▶ PPA Provision: National Curriculum music delivery
- ▶ Instrumental Tuition (individual, small group or whole class)
- ▶ Whole school singing assemblies
- ▶ In-school group music making (both instrumental and choral)
- ▶ After-school clubs
- ▶ Support for concerts and performances
- ▶ Maximum of 6 hours contact time

Charges: £245 per day

All Musician in Residence packages will be billed upfront at the start of the Academic Year based on a 33 week buy-back duration (this equates to £8,085 per annum per day of tuition ordered). Please note that the maximum amount of contact time per day is 6 hours and timetables should be arranged in discussion with the teacher in advance.

a member of staff responsible for behavior will need to remain with the class throughout the lesson.



GROUP MUSIC MAKING & AFTER SCHOOL CLUBS

The Music Service can provide a flexible solution to in-school music making provision including after school clubs where required. Tuition can take place anytime during the extended school day and is offered on a wide range of instruments from music tech to full scale opera projects, just ask!

If NMS teachers are required to support additional activities (e.g. concerts), this must be booked in advance through Norfolk Music Service. This will be subject to teacher availability and charged for at an hourly rate.

Charges: £48 per hour

All After School Clubs will be billed upfront at the start of the academic year. This is charged for 33 weeks of the year.

A member of the school staff must dismiss students at the end of the day.



GROUP MUSIC MAKING OPPORTUNITIES IN THE COMMUNITY

Ensembles are an important part of learning to play a musical instrument and are often the most enjoyable and socially rewarding part of the process. There are many Group Music Making opportunities across the County where young people can take part in ensembles and additional lessons.

The Music Service works towards providing a musical pathway for all its young players for every stage of learning. Further information on opportunities in your area can be found here: <https://www.nmhubs.co.uk/site/about-lead-organisation/ensembles>









TEACHING CALENDAR 2025/26

| September 2025 | | | | | | |
|----------------|----|----|----|----|----|----|
| WK | M | T | W | T | F | S |
| | 1 | 2 | 3 | 4 | 5 | 6 |
| 1 | 8 | 9 | 10 | 11 | 12 | 13 |
| 2 | 15 | 16 | 17 | 18 | 19 | 20 |
| 3 | 22 | 23 | 24 | 25 | 26 | 27 |
| 4 | 29 | 30 | | | | |

| October 2025 | | | | | | |
|--------------|----|----|----|----|----|----|
| WK | M | T | W | T | F | S |
| 4 | | | 1 | 2 | 3 | 4 |
| 5 | 6 | 7 | 8 | 9 | 10 | 11 |
| 6 | 13 | 14 | 15 | 16 | 17 | 18 |
| 7 | 20 | 21 | 22 | 23 | 24 | 25 |
| | 27 | 28 | 29 | 30 | 31 | |

| November 2025 | | | | | | |
|---------------|----|----|----|----|----|----|
| WK | M | T | W | T | F | S |
| | | | | | 1 | 2 |
| 8 | 3 | 4 | 5 | 6 | 7 | 8 |
| 9 | 10 | 11 | 12 | 13 | 14 | 15 |
| 10 | 17 | 18 | 19 | 20 | 22 | 23 |
| 11 | 24 | 25 | 26 | 27 | 28 | 29 |

| December 2025 | | | | | | |
|---------------|----|----|----|----|----|----|
| WK | M | T | W | T | F | S |
| 12 | 1 | 2 | 3 | 4 | 5 | 6 |
| 13 | 8 | 9 | 10 | 11 | 12 | 13 |
| | 15 | 16 | 17 | 18 | 19 | 20 |
| | 22 | 23 | 24 | 25 | 26 | 27 |
| | 29 | 30 | 31 | | | |

| January 2026 | | | | | | |
|--------------|----|----|----|----|----|----|
| WK | M | T | W | T | F | S |
| | | | | 1 | 2 | 3 |
| 1 | 5 | 6 | 7 | 8 | 9 | 10 |
| 2 | 12 | 13 | 14 | 15 | 16 | 17 |
| 3 | 19 | 20 | 21 | 22 | 23 | 24 |
| 4 | 26 | 27 | 28 | 29 | 30 | 31 |

| February 2026 | | | | | | |
|---------------|----|----|----|----|----|----|
| WK | M | T | W | T | F | S |
| 4 | | | | | | 1 |
| 5 | 2 | 3 | 4 | 5 | 6 | 7 |
| 6 | 9 | 10 | 11 | 12 | 13 | 14 |
| | 16 | 17 | 18 | 19 | 20 | 21 |
| 7 | 23 | 24 | 25 | 26 | 27 | 28 |

| March 2026 | | | | | | |
|------------|----|----|----|----|----|----|
| WK | M | T | W | T | F | S |
| | | | | | | 1 |
| 8 | 2 | 3 | 4 | 5 | 6 | 7 |
| 9 | 9 | 10 | 11 | 12 | 13 | 14 |
| 10 | 16 | 17 | 18 | 19 | 20 | 21 |
| 11 | 23 | 24 | 25 | 26 | 27 | 28 |
| | 30 | 31 | | | | |

| April 2026 | | | | | | |
|------------|----|----|----|----|----|----|
| WK | M | T | W | T | F | S |
| | | | 1 | 2 | 3 | 4 |
| | 6 | 7 | 8 | 9 | 10 | 11 |
| 1 | 13 | 14 | 15 | 16 | 17 | 18 |
| 2 | 20 | 21 | 22 | 23 | 24 | 25 |
| 3 | 27 | 28 | 29 | 30 | | |

| May 2026 | | | | | | |
|----------|----|----|----|----|----|----|
| WK | M | T | W | T | F | S |
| 3 | | | | | 1 | 2 |
| 4 | 4 | 5 | 6 | 7 | 8 | 9 |
| 5 | 11 | 12 | 13 | 14 | 15 | 16 |
| 6 | 18 | 19 | 20 | 21 | 22 | 23 |
| | 25 | 26 | 27 | 28 | 29 | 30 |

| June 2026 | | | | | | |
|-----------|----|----|----|----|----|----|
| WK | M | T | W | T | F | S |
| 7 | 1 | 2 | 3 | 4 | 5 | 6 |
| 8 | 8 | 9 | 10 | 11 | 12 | 13 |
| 9 | 15 | 16 | 17 | 18 | 19 | 20 |
| | 22 | 23 | 24 | 25 | 26 | 27 |
| 10 | 29 | 30 | | | | |

| July 2026 | | | | | | |
|-----------|----|----|----|----|----|----|
| WK | M | T | W | T | F | S |
| 10 | | | 1 | 2 | 3 | 4 |
| 11 | 6 | 7 | 8 | 9 | 10 | 11 |
| 12 | 13 | 14 | 15 | 16 | 17 | 18 |
| | 20 | 21 | 22 | 23 | 24 | 25 |
| | 27 | 28 | 29 | 30 | 31 | |

Key:
 Teaching Days

Please note lessons are based on a Service Level Agreement of a minimum of 33 weeks of the academic year. We are unable to offer a contract for less than 33 weeks. Lessons will be delivered as per the Teaching Calendar. Teaching Days are marked in blue.



Further information on Hub Subscription packages from September 2025 will be emailed to schools in the Summer term. This will also give you the opportunity to register for 10 weeks of CIL for your year 4 or year 7 classes.

This will be allocated on a first come first served basis. Any additional tuition will be added to a waiting list and offered as soon as an appropriate teacher is available for your chosen instrument.

To discuss any individual educational setting requirements further please contact [**krista.ribbons@norfolk.gov.uk**](mailto:krista.ribbons@norfolk.gov.uk)